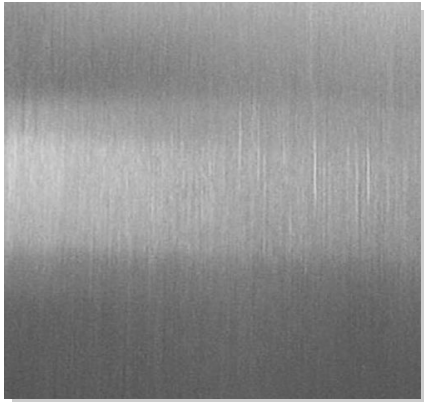


Stainless Steel Textured Finishes

Textured Surface Finishes on Stainless Steel



NO. 4 FINISH

A lightly grained surface produced by single-directional abrading. The most common stainless finish for architectural products.



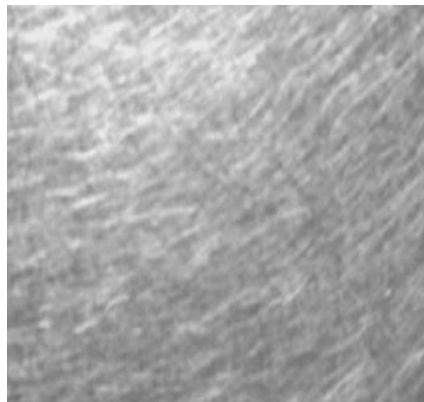
NO. 8 FINISH (MIRROR POLISHED)

Obtained by polishing with successively finer abrasives, then buffing with a very fine compound.



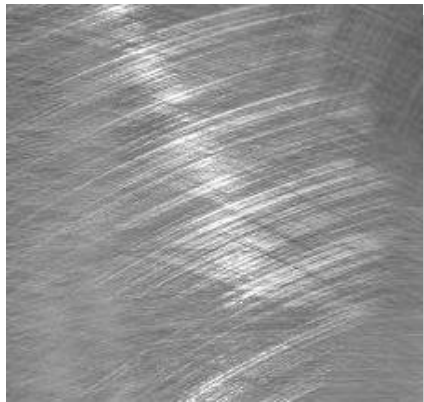
ANGEL HAIR FINISH

Produced by medium-fine grit orbital sanding, non-directional.



NON-DIRECTIONAL FINISH

Produced by fine grit orbital sanding (non-directional) on No. 2B (mill finish) stainless steel.



RANDOM SWIRL FINISH

Grained surface produced by random multi-directional abrading.



BEAD BLASTED FINISH

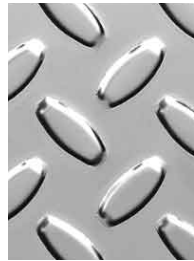
Produced by bead-blasting No. 2B (mill) stainless steel. Surface has a matte finish with a dull to glossy sheen depending on the size of glass bead utilized.

NOTE: Illustrations above may differ slightly from actual finishes. Finish samples will be provided for approval at time of order. Special finishes available - contact factory for more information.

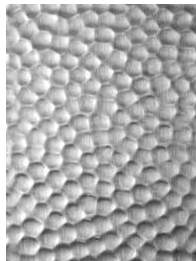
Textured + Embossed Stainless Steel

Textured / embossed stainless steel can be utilized for a variety of applications, including panel material. By combining textures and finishes, i.e. a door in No. 4 finish with panels in a textured metal, the result is striking.

Textured Stainless



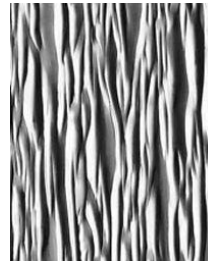
RTP



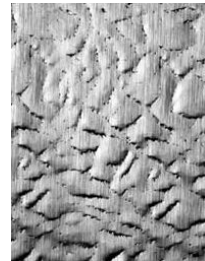
1.HM



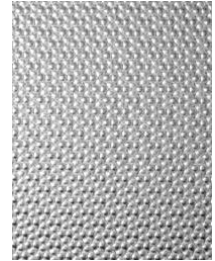
2.FL



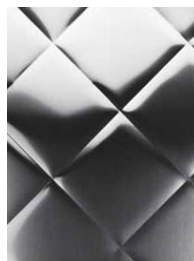
1.CS



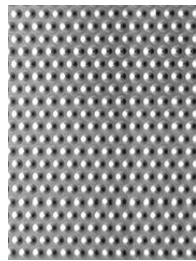
60.LTH



3.ND



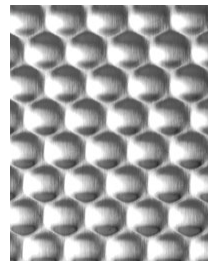
3.QLT



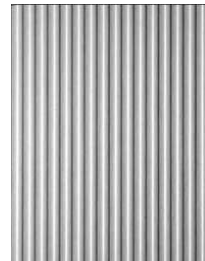
7.DL



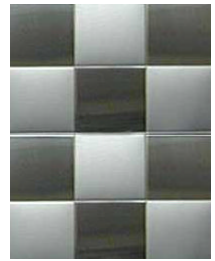
DIAGONAL



6.HC



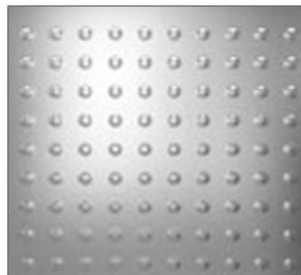
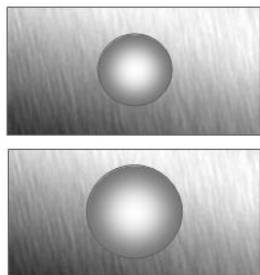
6.SL



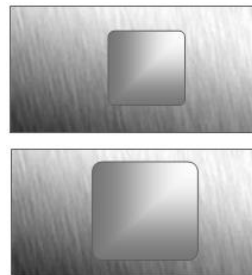
CHECKER BOARD

Embossing

StileLine produces embossed stainless steel door faces that are available in an unlimited number of design configurations, utilizing square or round dies in several different sizes



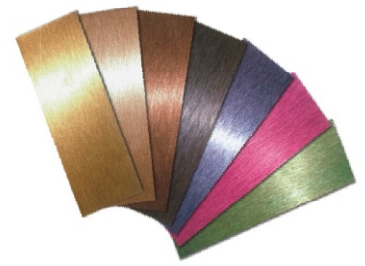
ROUND



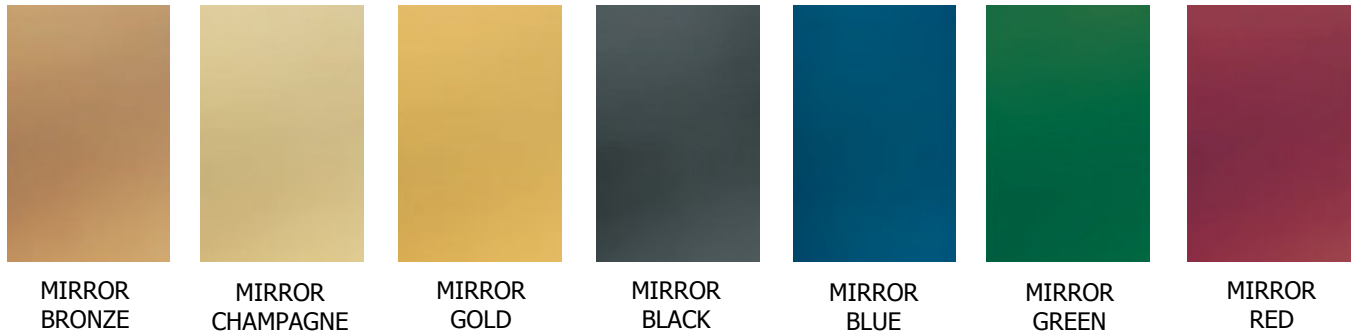
SQUARE

Colored Stainless Steel

When stainless steel is specified, there is no reason to limit the color choice to silver. A rainbow of choices are available in both satin (grained) and translucent (mirror polished) colors providing considerable design flexibility for doors and frames. Contact factory for more information.



Mirror Finishes



MIRROR
BRONZE

MIRROR
CHAMPAGNE

MIRROR
GOLD

MIRROR
BLACK

MIRROR
BLUE

MIRROR
GREEN

MIRROR
RED

Satin Finishes



SATIN
BRONZE

SATIN
CHAMPAGNE

SATIN
GOLD

SATIN
BLACK

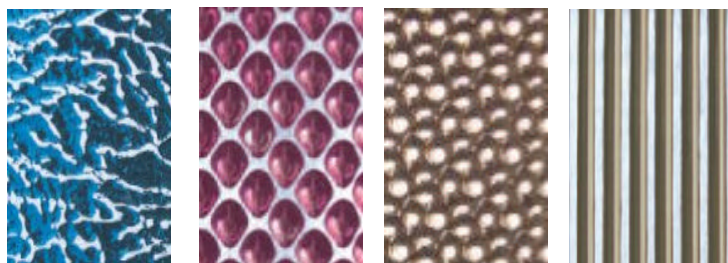
SATIN
CHARCOAL

SATIN
BLUE

SATIN
GREEN

SATIN
RED

Sampling of Colored Textures



PAMPAS

PEARL

PALADIN

SATIN
PINSTRIPE



Colored Stainless Steel

- Entrance Doors + Frames
- Elevator Door Faces
- Panels + Surrounds

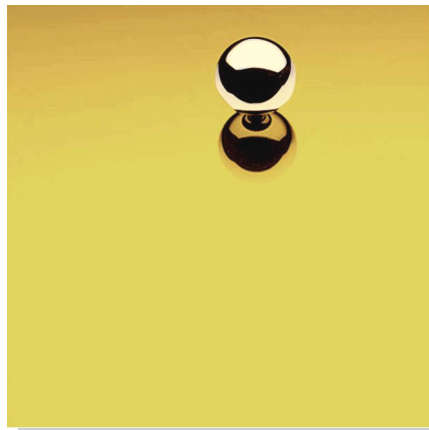
Bronze Textured Finishes

Textured Surface Finishes on Alloy 464



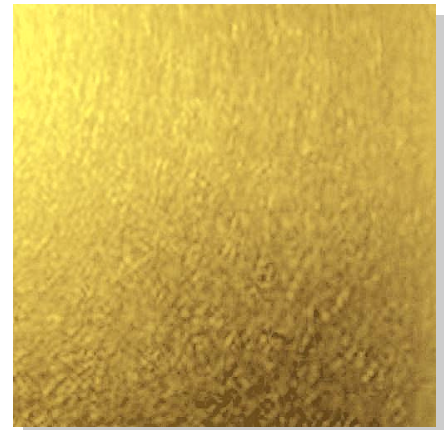
NO. 4 FINISH

A lightly grained surface produced by single-directional abrading. The most common finish for architectural products.



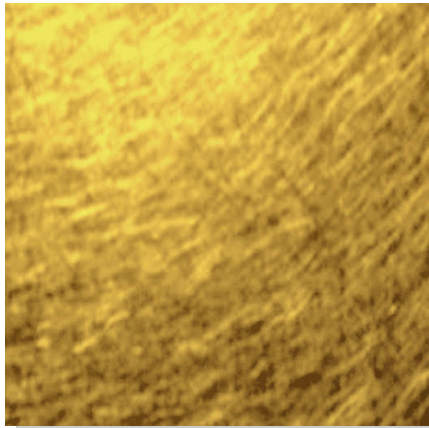
NO. 8 FINISH (MIRROR POLISHED)

Obtained by polishing with successively finer abrasives, then buffing with a very fine compound.



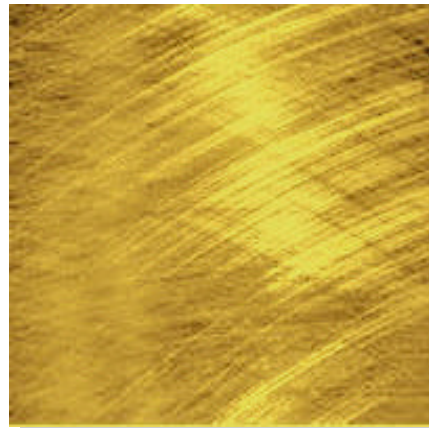
NON-DIRECTIONAL FINISH

Produced by fine grit orbital sanding (non-directional) on mill finish metal.



ANGEL HAIR FINISH

Produced by medium-fine grit orbital sanding, non-directional.



RANDOM SWIRL FINISH

Grained surface produced by random multi-directional abrading.

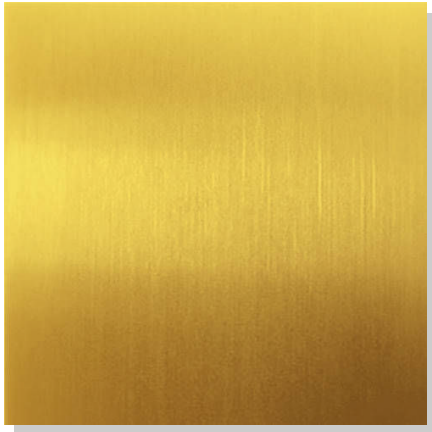
CLEAR COAT

An optional high-performance factory-applied clear coat is available in satin, semi-gloss, and high gloss sheens.

NOTE: Illustrations above may differ slightly from actual finishes. Finish samples will be provided for approval at time of order. Special finishes available - contact factory for more information.

Patina Finishes

Shown on Alloy 464 Naval Brass, #4 Finish



NATURAL

The natural color of Alloy 464 Naval Brass; a bright golden hue.



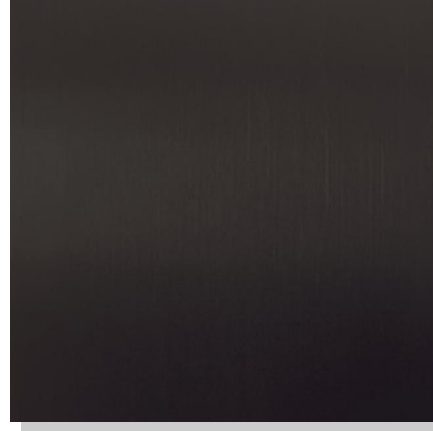
MEDIUM BRONZE

A rich medium brown with pronounced golden hues. Similar to US5.



OIL RUBBED BRONZE

A dark brown color with deep golden tones of varying intensity. Similar to US10B



DARK STATUARY BRONZE

A dark statuary brown-black color that varies slightly with the natural characteristics of the metal.

Similar to US20A

CLEAR COAT

An optional high-performance factory-applied clear coat is available in satin, semi-gloss, and high gloss sheens.

NOTE: Illustrations above may differ from actual colors due to the natural characteristics of the metal and hand-finishing processes. Finish samples will be provided for approval at time of order. Special finishes available - contact factory for more information.

Prime + Finish Paint

Standard Primer

StileLine® steel storefront systems are available prime coated with a proprietary EPA approved Alkyd gray primer (ready for finish painting by others).

Finish Painting



StileLine® steel storefront systems are available factory finish painted with Tnemec 1075 Endura Shield II Acrylic Polyurethane (Aliphatic), a superior heavy-duty industrial coating available in standard or custom colors. Online data available at:

Online technical data sheets: <http://www.tnemec.com/product/overview/?p=142>

Online Tnemec Color Charts: <http://www.tnemec.com/product/overview/?p=142&st=color>

Tnemec Advantages

■ Exceptional Durability

Tnemec makes the most advanced line of architectural coatings in the world. Tnemec finishes are extremely durable, and offer superior adhesion and gloss retention.

■ Minimal VOCs

Tnemec products comply with low VOC restrictions.

■ Long Life Cycle

Highly resistant to abrasion, wet conditions, corrosive fumes, and exterior weathering, Tnemec finishes typically last the life of a product with no need for repainting and its associated environmental costs.



Powder Coating

StileLine® steel storefront systems are available in factory powder coat finishes. Powder coating offers good durability and gloss retention, and is a process that has minimal environmental impact.

Online color charts available at:

<http://www.tigerdrylac.com>

Custom colors / color matching are also available.